

ADAM



CBS
ELECTRONICS

THE COMPLETE COMPUTER SYSTEM

ADAM

CBS Electronics have the technology and the research and development resources to bring you the best in computer hardware and software. In 1983 CBS Electronics introduced CBS ColecoVision, the new generation video game computer system, with arcade quality, sound and graphics. CBS Electronic's arcade licensed games cartridges included favourites such as Zaxxon, Donkey Kong, Mousetrap, Cosmic Avenger and Looping. These games not only proved very popular in the CBS ColecoVision format, but also in the cartridges made for other leading video game systems.

1984 heralds the arrival of another technological breakthrough for CBS Electronics; ADAM – the complete computer system.

ADAM is the complete computer system because it fulfils the needs of every personal computer user and makes personal computing fun, and useful, for every member of the family.

ADAM has several important features which mean direct benefits to the user and make ADAM the obvious first choice in personal computer systems.

ADAM is powerful – the 80K RAM memory module is more than enough for most people's needs.

ADAM can load, or save, programs quickly using the Digital Data Drive unit. This unique system is many times faster than conventional audio tape storage.

ADAM has an inbuilt word processing program which is easy and rewarding to use. Even the novice can produce professional results every time.

ADAM has an 89 key sculptured, professional keyboard. In addition to conventional keys there are 6 Command keys and 6 Smart keys which make programming and processing easy.

ADAM has a letter quality printer which uses a professional daisy wheel. ADAM prints at a rate of 120 words per minute which is twice the speed of a good typist; and the ADAM printer does not stop for coffee breaks or lunch.





Most important of all, ADAM is a network system which means that it works quickly with each unit sharing the workload. And the emphasis throughout, regardless of the task is simplicity – ADAM helps you along every step of the way.

ADAM™ EXPANSION MODULE 3

ADAM – the complete computer system is available as an Expansion Module for the CBS ColecoVision video game system.

When CBS ColecoVision and Expansion Module 3 are linked together via the Expansion Module Interface the full powers of the amazing ADAM come to life:

Easy to use Basic language, large memory for complex programs, Digital Data Drive for program storage, easy to operate professional keyboard and letter quality printer to produce hardcopy evidence of your work. In addition, a wide range of software is available covering business programs, education, leisure and games.

The great advantage of building your ADAM computer system this way is that the video game system and home computer can be separated. This has some practical merits: younger children can play games without experimenting with the computer; the game system can be brought home from the office and taken with you on holidays or week-end trips.

POWERFUL MEMORY MODULE

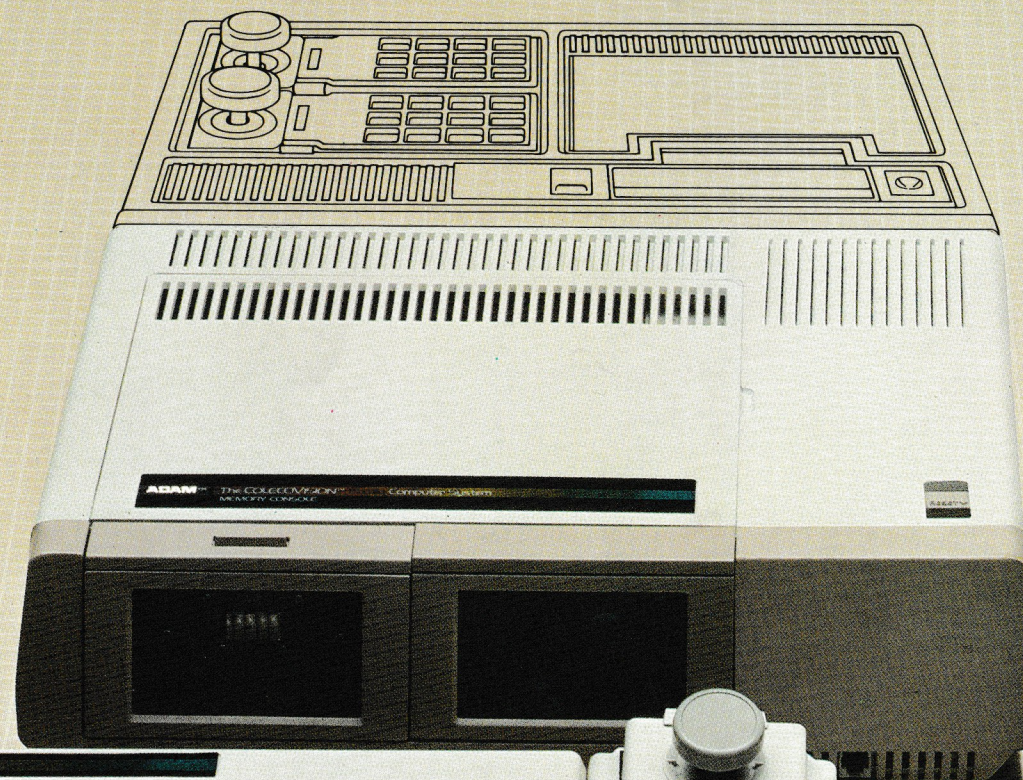
ADAM's memory module has 3 important features:

80K RAM memory capacity – more than enough storage capability for the most complex programs.

Digital Data Drive – for loading and down loading of programs. Specially developed digital encoding of data allows fast operation. Each Digital Data pack has enough storage space for 250 A4 pages of double spaced type. 3 Digital Data packs come free with ADAM; Smart Basic for computer programming; Blank Data pack for file storage and the fantastic Buck Rogers Planet of Zoom game.

Word Processing Program – which enables you to edit, erase and experiment with letters, reports, charts on your TV screen before printing the final copy.

And even that can be changed!





SCULPTURED PROFESSIONAL KEYBOARD

ADAM's keyboard is sculptured and the keys are arranged in a professional layout. In addition to normal typewriting keys there are 6 Command keys and 6 Smart keys. Command keys allow you to direct the computer to carry out a particular operation. For example, if you press the command key labelled PRINT the computer will prepare to PRINT. Use of the SMART keys (as prompted by the TV screen) will allow you to select the material which you want to PRINT, and then PRINT that selection.

Command keys and Smart keys make word processing child's play with ADAM.

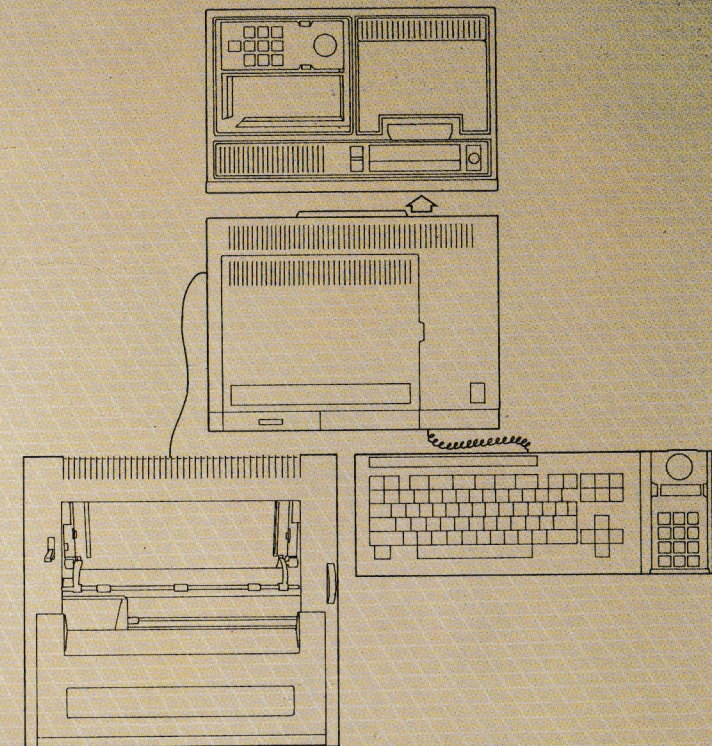
LETTER QUALITY PRINTER

ADAM's letter printer features a daisy wheel to produce top quality results. Any paper size up to 9½" wide can be used, either as single sheets or as fanfold.

Printing rate is 120 words per minute i.e. twice the rate of a very good typist and results are always professional.

Using the word processing program you can adjust tabs, margins, spacing and select automatic page numbering before instructing ADAM's printer to PRINT.

Changing the printer ribbon is easily done by removing and replacing the ribbon cartridge.



HOW EXPANSION MODULE 3 ADDS ON

Simply plug the memory module into the Expansion Module Interface in the CBS ColecoVision video game unit. Connect the (new) power supply to the printer. Switch on the power supply and you have a fully functional, 80K complete computer system.

ADAM – THE COMPLETE COMPUTER SYSTEM

Later in this booklet there are more detailed explanations of word processing, programming and printing with ADAM. By now, it should be clear that ADAM is the complete computer system answering all the computer needs of the family and the small business.

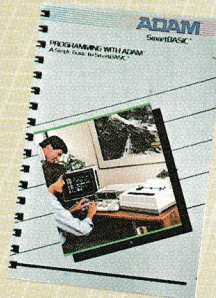
ADAM is not only powerful, but friendly and guides you every step of the way without slowing your progress.

Whether you're a professional or a novice, ADAM can help make your life more enjoyable, more fun and much more productive.

If you look at another computer, see how it compares with ADAM before you decide.

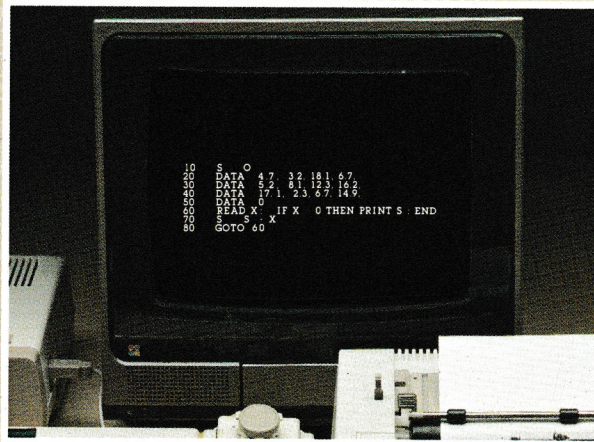
PROGRAMMING WITH ADAM

ADAM uses a simplified form of Basic language called Smart Basic. Using the Smart Basic manual you can learn, step by step, about computer programming, or if you already know how to program using Basic, begin right away with your own programs.



IS IT EASY TO WRITE PROGRAMS?

ADAM's smart basic manual gives you step by step guides to programming. From simple examples which help you get to know ADAM and the way the computer works, to more complex routines which lead you into higher levels of expertise. How far you go is up to you.



One important feature of ADAM is that program errors are highlighted immediately, and often ADAM actually tells you what you should have written. This feature removes the frustration found with some other computers which only print out your errors when your program is complete.

IS ADAM COMPATIBLE WITH OTHER COMPUTER SOFTWARE?

ADAM is designed to be CP/M compatible. CP/M is a widely used operating system and thousands of CP/M application programs have been written. The most popular CP/M programs will be available on Digital Data packs. In addition CP/M compatible software can also be run on ADAM with the additional purchase of a Disc Drive (available soon).

WILL ADAM'S SOFTWARE BE INTENDED FOR HOME OR BUSINESS USE?

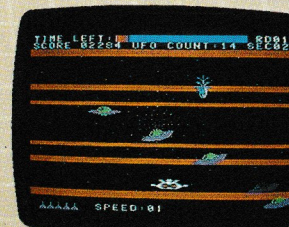
ADAM's software will cover the entire spectrum of home and business requirements, from early learning programs through homework helper series to Smart Filer "Data Base" management programs.

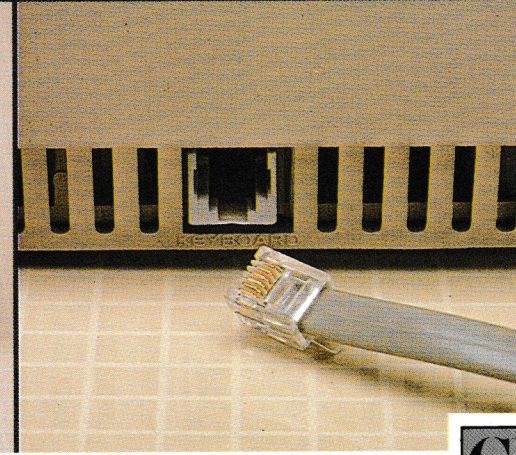
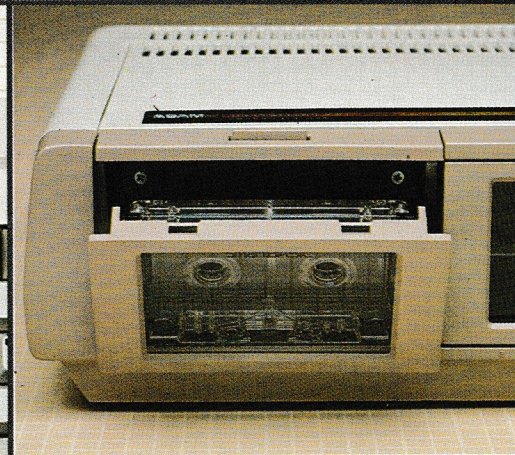
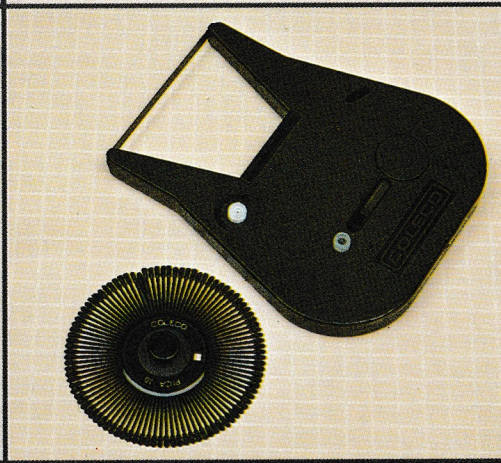
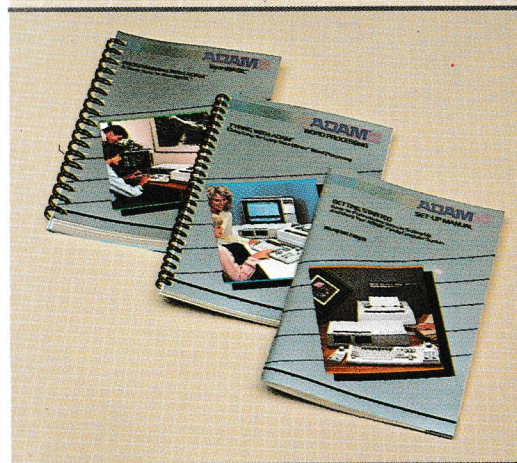
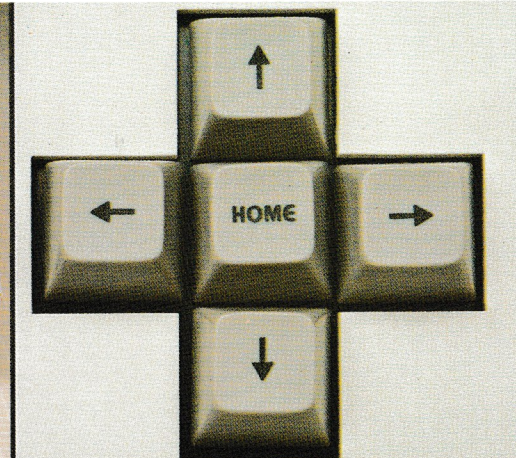
DOES ADAM PLAY GAMES PROGRAMS?

The ADAM owner has an instant library of arcade quality games available in two formats, cartridges and Digital Data packs.

CBS ColecoVision high resolution game cartridges slot into the ADAM Memory Console to provide the challenge and excitement of the arcade.

Also available are ADAM Super Games which come in Digital Data pack format. Buck Rogers and the Planet of Zoom is included with your ADAM complete computer system.







CBS
ELECTRONICS

Headley Road East, Woodley, Berks
Telephone: Reading (0734) 698188. Telex: 849787. .

Your CBS Electronics dealer is:

HAMLEYS OF REGENT STREET LIMITED
188/196 REGENT STREET, LONDON W1R 6BT